



PRESS-BOOT

**Flexible Connector
for Pipes and Manholes**



PRESS-BOOT™

Each **PRESS-BOOT** connector consists of three components: a **BOOT**, an **ADJ: EXPANSION RING**, and a **TAKE-UP CLAMP**. **PRESS-BOOT** connectors enable the manhole manufacturer and installation contractor to provide a flexible, watertight connection where pipe enters manhole.

Press-Seal believes all information is accurate as of its publication date. Information, specifications, and prices are all subject to change without notice. Press-Seal is not responsible for any inadvertent errors. Copyright 2010.

3



PRESS-SEAL GASKET CORPORATION

Protecting Our Planet's Clean Water Supply

Press-Seal Gasket is an ISO 9001:2008 and ISO 14001:2004 Registered Company

800-348-7325 Fax (260) 436-1908

email: sales@press-seal.com

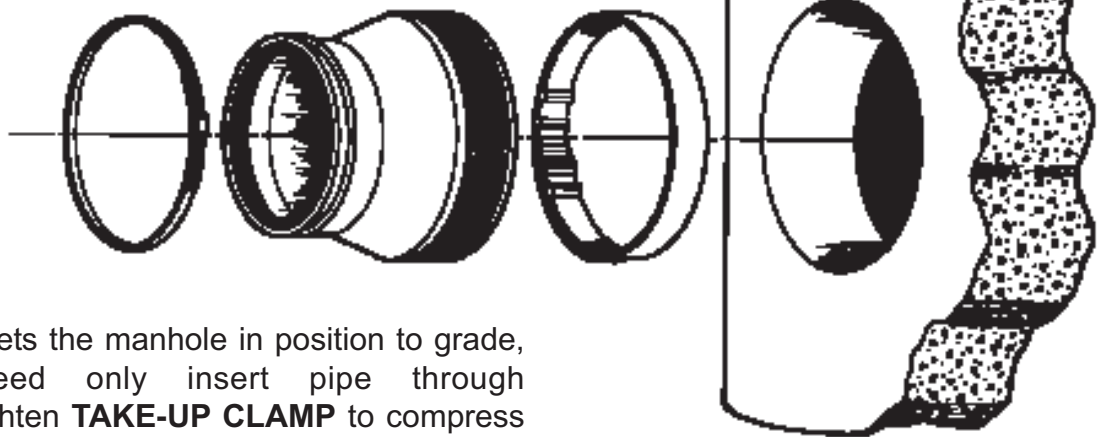
web: www.press-seal.com





PRESS-BOOT Flexible Connector for Pipes and Manholes

The **ADJ: EXPANSION RING** is mechanically expanded to compress the **BOOT** against the receptacle hole surface in the manhole wall. After adequate compression of the **BOOT** is achieved, the self-locking design of the **ADJ: EXPANSION RING** interlocks to insure against loss of compression. This secures **PRESS-BOOT** in the manhole wall, ready to accept the desired size and type of pipe. Once **PRESS-BOOT** is installed, there is no need to re-tighten the **ADJ: EXPANSION RING** before, during, or after shipment to the jobsite.



When the contractor sets the manhole in position to grade, ditch personnel need only insert pipe through **PRESS-BOOT** and tighten **TAKE-UP CLAMP** to compress the **BOOT** against the outside wall of pipe entering manhole.

PRESS-BOOT offers the unique advantages of the **ADJ: EXPANSION RING**. This patented design provides unmatched flexibility in sealing a wide variation of hole sizes. The **ADJ: EXPANSION RING** is precision-molded of a material with corrosion resistance superior to competitive metallic expansion rings.

The **ADJ: EXPANSION RING** installs quickly and easily, and requires only minimal training of installers. If necessary, the **ADJ: EXPANSION RING** is easily removed and re-installed.

PIPE INSTALLATION

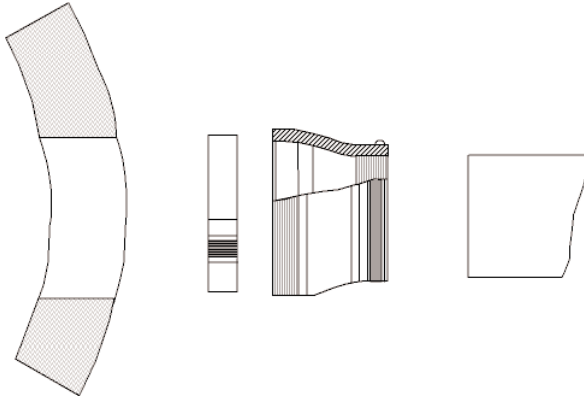
1. Clean pipe and boot to ensure no dirt or foreign materials are present.
2. Clamping surface on pipe must be clean and smooth.
3. Center pipe in opening and insert until pipe breaks the inside plane of manhole.
4. Attach take-up clamp(s) and stagger screw(s) of clamp(s) around the groove of the gasket so that take-up pressure will be equalized. Make sure each clamp is completely in the correct groove.
5. Using a torque ratchet or torque wrench, gradually tighten all screw(s) of clamp(s) in an alternating pattern to 60lbs/in torque.
6. After reaching 60lbs/in torque on final screw, check all screws again to ensure equal compression of all clamps.
7. Vacuum testing shall be conducted in accordance with ASTM C-1244-02.
8. Adjust pipe to line and grade. Use proper bedding, backfill materials and techniques so that pipe deflection and deformation is minimized. Installation of the concrete structure shall be such that differential settlement between the structure and the pipeline shall be less than 10% of pipe diameter for pipes less than 20" and shall be less than 5% of pipe diameter for pipes between 20 and 60 inches in diameter.
9. Any pipe stubs installed in the manhole must be positively restrained from movement per ASTM C-923. Press-Seal is not responsible for blow outs due to unrestrained pipe stub or future lateral connections.

Press-Seal believes all information is accurate as of its publication date. Information, specifications, and prices are all subject to change without notice. Press-Seal is not responsible for any inadvertent errors. Copyright 2010.





PRESS-BOOT Flexible Connector for Pipes and Manholes



For over a decade, our company has produced a flexible connector system that accepts a large variation in pipe diameters. Now with **PRESS-BOOT**, we offer a system that allows large variations in **both** hole size **and** pipe diameter.

Press-Boot Part No.	Hole Size	A Actual Hole/Size in Min./Max	B Boot Length	C Pipe O.D. Accommodation	Take-up Clamp Quantity
555.8QRS	8.0	7.8 TO 8.5	6.5	1.7 TO 4.8	(0,1,2)
555.1106	11.0	10.7 TO 11.5	8.0	5.7 TO 6.9	(0,1,2)
555.1108	11.0	10.7 TO 11.5	6.0	8.1 TO 9.1	(0,1)
555.11M	11.0	10.7 TO 11.5	8.0	8.0 TO 9.1	(0,1,2)
555.1122	11.0	10.7 TO 11.5	6.0	8.5 TO 9.1	(0,1)
555.11B	11.0	10.7 TO 11.5	9.0	8.5 TO 9.1	(0,1,2)
555.1206	12.0	10.7 TO 11.5	8.0	5.7 TO 6.9	(0,1,2)
555.1208	12.0	11.5 TO 12.5	6.0	8.1 TO 9.1	(0,1)
555.12M	12.0	11.5 TO 12.5	8.0	8.0 TO 9.1	(0,1,2)
555.1222	12.0	11.5 TO 12.5	6.0	9.4 TO 10.2	(0,1)
555.12B	12.0	11.5 TO 12.5	9.0	9.4 TO 10.2	(0,1,2)

PRESS-BOOT delivers these advantages:

- * **PRESS-BOOT** is easily installed from exterior of manhole.
- * **PRESS-BOOT** connectors may be removed and reused.
- * **PRESS-BOOT** is pre-lubricated at factory for maximum performance.
- * **ADJ: EXPANSION RING** seals wide variations in hole sizes.
- * **ADJ: EXPANSION RING** is self-aligning during installation.
- * **ADJ: EXPANSION RING** does not require re-tightening after installation.
- * **ADJ: EXPANSION RING** offers superior corrosion resistance.

Press-Seal believes all information is accurate as of its publication date. Information, specifications, and prices are all subject to change without notice. Press-Seal is not responsible for any inadvertent errors. Copyright 2010.

