

# CAST-A-SEAL 12-08

## PIPE TO MANHOLE & TANK CONNECTOR - FOR 8" (200 mm) PVC

### What It Is

The Cast-A-Seal 12-08 is a simple cast-in pipe-to-manhole connector that offers a watertight flexible connector that is cast into the structure when the concrete is poured.

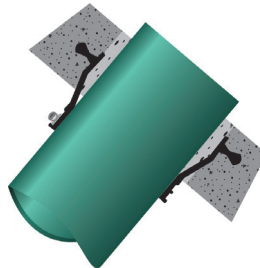
The key lock is integrally cast-in during the production process providing a secure seal for storm water and sanitary collection systems.

### How It Works

- The connector is folded into the casting position.
- It is placed on the reusable mandrel and then placed on the form.
- After curing, the mandrel is removed.
- The connector is then simply unfolded at the jobsite.
- Take-up clamps made from series 304 stainless steel with quick adjusting screws secure the connector to the pipe.

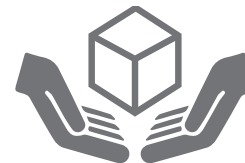
### Why It's Better

- Adapts easily to pipe size changes or if the connector gets damaged.
- Can be used as an outfall hole in most coring operations.
- Contractor can save time and money by backfilling immediately.



### Where To Use

- Manholes
- Wet wells
- Square pump and lift stations
- Stormwater structures
- On-site treatment structures
- Junction chambers
- Grease interceptors



CARE & STORAGE

PAGE 5



Press-Seal believes all information is accurate as of its publication date. Information, specifications, and prices are all subject to change without notice. Press-Seal is not responsible for any inadvertent errors. Copyright 2022.

Phone: 800-348-7325  
Fax: (260) 436-1908

**PRESS-SEAL CORPORATION**  
*Protecting Our Planet's Clean Water Supply*  
ISO 9001: Registered • Version 02.16.22.11.17

Email: [sales@press-seal.com](mailto:sales@press-seal.com)  
Web: [www.press-seal.com](http://www.press-seal.com)

# CAST-A-SEAL 12-08

## SUBMITTAL SPECIFICATIONS

A flexible pipe-to-manhole connector shall be employed in the connection of the sanitary and storm drain sewer pipe to precast manholes or other structures. The connector shall be Cast-A-Seal® 12-08 as manufactured by Press-Seal Corporation, Fort Wayne, Indiana, or approved equal. The connector shall be the sole element relied on to assure a flexible, watertight seal of the pipe to manhole. The connector shall consist of a rubber gasket and one or two external take-up clamp(s).

The rubber gasket element shall be constructed solely of synthetic or natural rubber and shall meet or exceed the requirements of ASTM C 923. The connector casting mandrel system shall include a precisely-formed opening in the concrete for installation of a replacement connector in the event that the cast-in connector is damaged.

The external take-up clamp shall be constructed of Series 300 non-magnetic stainless steel and shall utilize no welds in its construction.

The clamp shall be installed by torquing the adjusting screw using a torque-setting wrench available from the connector manufacturer.

Selection of the proper size connector for the structure and pipe requirement, and installation thereof, shall be in strict conformance with the recommendations of the connector manufacturer. And dead end pipe stubs installed in connectors shall be restrained from movement per ASTM C 923.

The finished connection shall provide sealing to 13 psi (minimum) and shall accommodate deflection of the pipe to 7 degrees (minimum) without loss of seal.

Vacuum testing shall be conducted in strict conformance with ASTM C 1244 prior to backfill. Other testing shall be conducted in strict conformance with the requirements of the connector manufacturer.

### Product Performance

CAST-A-SEAL 12-08 meets and/or exceeds all requirements of ASTM C923, including physical properties of materials and performance testing, including:

- 13 PSI minimum in straight alignment
- 10 PSI at minimum 7° angle
- 10 PSI minimum under ultimate shear load of 150 lbs/in. pipe diameter

CAST-A-SEAL 12-08 meets the requirements of the following Standards, Specifications, Codes, and Test Methods:

- ASTM C 923 Standard Specification for Resilient Connectors Between Reinforced Concrete Manhole Structures, Pipes, and Laterals
- ASTM C 1478 Standard Specification for Storm Drain Resilient Connectors Between Reinforced Concrete Storm Sewer Structures, Pipes, and Laterals
- ASTM C 1244 Standard Test Method for Concrete Sewer Manholes by the Negative Air Pressure (Vacuum) Test
- ASTM F 2510 Standard Specification for Resilient Connectors Between Reinforced Concrete Manhole Structures and Corrugated HDPE pipes

Press-Seal believes all information is accurate as of its publication date. Information, specifications, and prices are all subject to change without notice. Press-Seal is not responsible for any inadvertent errors. Copyright 2022.

Phone: 800-348-7325  
Fax: (260) 436-1908

**PRESS-SEAL CORPORATION**  
*Protecting Our Planet's Clean Water Supply*  
ISO 9001: Registered • Version 02.16.22.11.17

Email: sales @press-seal.com  
Web: www.press-seal.com



# CAST-A-SEAL 12-08

## SELECTION GUIDES

PIPE DESCRIPTION	PIPE O.D. Inch/mm	PART NUMBER	CLAMP PART #	BOX QUANTITY
8" PVC	8.40" - 8.625" 213 mm - 219 mm	452.1208	(1) 600.152	160/PALLET MIN ORDER 10 (10 PER BOX)
8" (150 mm) CI/DI 8" (150 mm) C900 PVC	8.00" - 9.05" 230 mm	556.1208.A	(1) 600.152	10/CTN 100/PALLET

CASTING MANDRELS & CASTING RINGS	
ITEM	PART NUMBER
CAST-A-SEAL 12-08 <b>BLACK</b> MANDREL ONLY FOR 48" x 5" MANHOLE	227.1208
OUTER <b>RED</b> CASTING RING ONLY FOR 48" x 5" MANHOLE	258.1208
CAST-A-SEAL 12-08 <b>BLUE/BLACK</b> MANDREL ONLY FOR 60" x 6" MANHOLE	227.1208.60
OUTER <b>BLUE</b> CASTING RING FOR 60" x 6" MANHOLE	258.1208.60

REPLACEMENT PARTS	
ITEM	PART NUMBER
OUTER JACKET ATTACHMENT WITH BOLT	227.1208.OJA
CORE MOUNTED MAGNET	230.MAGNET



Press-Seal believes all information is accurate as of its publication date. Information, specifications, and prices are all subject to change without notice. Press-Seal is not responsible for any inadvertent errors. Copyright 2022.

Phone: 800-348-7325  
Fax: (260) 436-1908

**PRESS-SEAL CORPORATION**  
*Protecting Our Planet's Clean Water Supply*  
ISO 9001: Registered • Version 02.16.22.11.17

Email: sales @press-seal.com  
Web: www.press-seal.com