

# CAST-A-SEAL 402/402F

## PIPE TO MANHOLE & TANK CONNECTOR

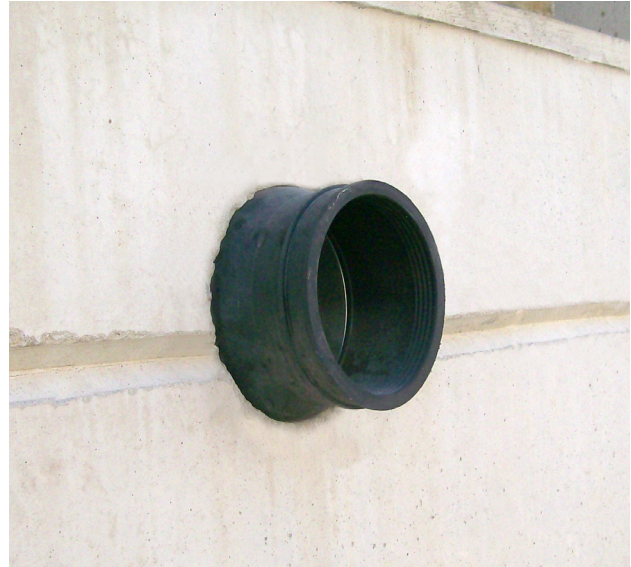
### What It Is

The Cast-A-Seal 402/402F is a simple cast-in pipe-to-manhole connector that offers a watertight flexible connector that is cast into the structure when the concrete is poured.

The key lock is integrally cast-in during the production process providing a secure seal for storm water and sanitary collection systems.

### How It Works

- The connector is folded into the casting position.
- It is placed on the reusable mandrel and then placed on the form.
- After curing, the mandrel is removed.
- The connector is then simply unfolded at the jobsite.
- Take-up clamps made from series 304 stainless steel with quick adjusting screws secure the connector to the pipe.



### Why It's Better

- Durable and reusable mandrel forms.
- Integrally cast into the structure at time of casting.
- Contractor can backfill immediately after pipe insertion.
- The 4" connector is available in either open or closed end face.
- Contractor can save time and money by backfilling immediately.

### Where To Use

- Manholes
- Wet wells
- Square pump and lift stations
- Stormwater structures
- On-site treatment structures
- Junction chambers
- Grease interceptors



Press-Seal believes all information is accurate as of its publication date. Information, specifications, and prices are all subject to change without notice. Press-Seal is not responsible for any inadvertent errors. Copyright 2022.

Phone: 800-348-7325  
Fax: (260) 436-1908

**PRESS-SEAL CORPORATION**  
*Protecting Our Planet's Clean Water Supply*  
ISO 9001: Registered • Version 02.16.22.11.17

Email: [sales@press-seal.com](mailto:sales@press-seal.com)  
Web: [www.press-seal.com](http://www.press-seal.com)

# CAST-A-SEAL 402/402F

## SUBMITTAL SPECIFICATIONS

A flexible pipe-to-structure connector shall be employed in the connection of the sanitary sewer pipe to precast structures. The connector shall be Cast-A-Seal® 402/402F as manufactured by Press-Seal Corporation, Fort Wayne, Indiana, or approved equal. The connector shall be the sole element relied on to assure a flexible, watertight seal of the pipe to the precast structure. The connector shall consist of a rubber gasket and an external take-up clamp.

The rubber gasket element shall be constructed solely of synthetic or natural rubber, and shall meet or exceed the physical property requirements of ASTM C 923.

The external take-up clamp shall be constructed of Series 300 non-magnetic stainless steel and shall utilize no welds in its construction. The clamp shall be installed by torquing the adjusting screw using a torque-setting wrench available from the connector manufacturer.

Selection of the proper size connector for the structure and pipe requirement, and installation thereof, shall be in strict conformance with the recommendations of the connector manufacturer. Any dead end pipe stubs installed in connectors shall be restrained from movement per ASTM C 923.

The finished connection shall provide sealing to 13 psi (minimum) and shall accommodate deflection of the pipe to 7 degrees (minimum) without loss of seal.

Vacuum testing shall be conducted in strict conformance with ASTM C 1244 prior to backfill. Other testing shall be conducted in strict conformance with the requirements of the connector manufacturer.

### Product Performance

Cast-A-Seal 402/402F meets and/or exceeds all requirements of ASTM C 923, including physical properties of materials and performance testing, including:

- 13 PSI minimum in straight alignment
- 10 PSI at minimum 7° angle
- 10 PSI minimum under shear load of 150 lbs/in. pipe diameter

Cast-A-Seal 402/402F meets and/or exceeds the requirements of the following Standards, Specifications, Codes, and Test Methods:

- IAPMO/ANSI Z1000 Standard for Prefabricated Septic Tanks
- IAPMO/ANSI Z1001 Standard for Prefabricated Gravity Grease Interceptors
- NPCA Best Practices Manual for Precast Concrete On-Site Wastewater Tanks
- NOWRA Model Code Framework
- ASTM C 1227 Standard Specification for Precast Concrete Septic Tanks
- ASTM C 1644 Standard Specification for Resilient Connectors Between Reinforced Concrete On-Site Wastewater Tanks and Pipes (CAS 402)
- ASTM C 1613 Standard Specification for Precast Concrete Grease Interceptor Tanks
- ASTM C 923 - Standard Specification for Resilient Connectors Between Reinforced Concrete Manhole Structures, Pipes, and Laterals
- ASTM C 1244 Standard Test Method for Concrete Sewer Manholes by the Negative Air Pressure (Vacuum) Test
- ASTM C 1478 - Standard Specification for Storm Drain Resilient Connectors Between Reinforced Concrete Storm Sewer Structures, Pipes, and Laterals

Press-Seal believes all information is accurate as of its publication date. Information, specifications, and prices are all subject to change without notice. Press-Seal is not responsible for any inadvertent errors. Copyright 2022.

Phone: 800-348-7325  
Fax: (260) 436-1908

**PRESS-SEAL CORPORATION**  
*Protecting Our Planet's Clean Water Supply*  
ISO 9001: Registered • Version 02.16.22.11.17

Email: sales @press-seal.com  
Web: www.press-seal.com



# CAST-A-SEAL 402/402F

## SELECTION GUIDE

PIPE SIZE	CAST-A-SEAL 402	PIPE O.D. RANGE	WALL THICKNESS*	APPLICATION
1.25" - 2" 31 - 51 mm	452.0250	1.5" - 2.75" 38 - 70 mm	2.5" - 6" 64 - 150 mm	STANDARD
4" 100 mm	452.0450	4.2" - 4.7" 107 - 119 mm	2.5" - 6" 64 - 150 mm	STANDARD
4" 100 mm	452.0402F1	4.2" - 4.7" 107 - 119 mm	2.5" - 4.0" 64 - 102 mm	Closed Face
6" 150 mm	452.0650	6.2" - 6.7" 157 - 170 mm	2.5" - 6" 64 - 150 mm	STANDARD
3" 75 mm	CAS ADAPTER	3.2" - 3.6" 81 - 91 mm	---	Use with 4" CAST-A-SEAL



Press-Seal believes all information is accurate as of its publication date. Information, specifications, and prices are all subject to change without notice. Press-Seal is not responsible for any inadvertent errors. Copyright 2022.

Phone: 800-348-7325  
Fax: (260) 436-1908

**PRESS-SEAL CORPORATION**  
*Protecting Our Planet's Clean Water Supply*  
ISO 9001: Registered • Version 02.16.22.11.17

Email: [sales@press-seal.com](mailto:sales@press-seal.com)  
Web: [www.press-seal.com](http://www.press-seal.com)