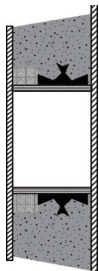
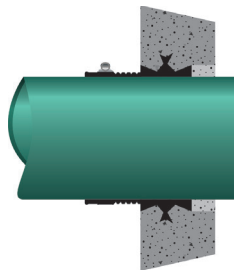


CAST-A-SEAL 603

PIPE TO MANHOLE CONNECTOR



CASTING POSITION



FINISHED PRODUCT

Where To Use

- Manholes
- Wet wells
- Square pump and lift stations
- Stormwater structures
- On-site treatment structures
- Junction chambers
- Grease interceptors



CARE & STORAGE

PAGE 5

What It Is

The Cast-A-Seal 603 is a simple cast-in pipe-to-manhole structure connector for 8-18" (200-450mm) PVC pipe that offers a watertight flexible connector that is cast into the structure when the concrete is poured.

The key lock is integrally cast-in during the production process providing a secure seal for storm water and sanitary collection systems.

How It Works

- The connector is folded into the casting position.
- It is secured on the reusable mandrel and then placed on the form.
- After curing, the mandrel is removed.
- The connector is then simply unfolded at the jobsite.
- Take-up clamps made from series 304 stainless steel with quick adjusting screws secure the connector to the pipe.

Why It's Better

- Can be used in a manhole or straight-wall structure.
- Mandrels and casting rings are available for 48 x 5" & 60 x 6" manholes.
- Casting tooling and mandrel for straight wall applications is easily fabricated from Styrofoam, host pipe or a steel ring.
- Contractor can save time and money by backfilling immediately.

Press-Seal believes all information is accurate as of its publication date. Information, specifications, and prices are all subject to change without notice. Press-Seal is not responsible for any inadvertent errors. Copyright 2022.



CAST-A-SEAL 603

SUBMITTAL SPECIFICATIONS

A flexible pipe-to-manhole connector shall be employed in the connection of the sanitary and storm drain sewer pipe to precast manholes or other structures. The connector shall be Cast-A-Seal® 603 as manufactured by Press-Seal Corporation, Fort Wayne, Indiana, or approved equal. The connector shall be the sole element relied on to assure a flexible, watertight seal of the pipe to manhole. The connector shall consist of a rubber gasket and one or two external take-up clamp(s).

The rubber gasket element shall be constructed solely of synthetic or natural rubber, and shall meet or exceed the requirements of ASTM C 923. The connector casting mandrel system shall include a precisely-formed opening in the concrete for installation of a replacement connector in the event that the cast-in connector is damaged.

The external take-up clamp shall be constructed of Series 300 non-magnetic stainless

steel and shall utilize no welds in its construction. The clamp shall be installed by torquing the adjusting screw using a torque-setting wrench available from the connector manufacturer.

Selection of the proper size connector for the structure and pipe requirement, and installation thereof, shall be in strict conformance with the recommendations of the connector manufacturer. And dead end pipe stubs installed in connectors shall be restrained from movement per ASTM C 923.

The finished connection shall provide sealing to 13 psi (minimum) and shall accommodate deflection of the pipe to 7 degrees (minimum) without loss of seal.

Vacuum testing shall be conducted in strict conformance with ASTM C 1244 prior to backfill. Other testing shall be conducted in strict conformance with the requirements of the connector manufacturer.

Product Performance

Cast-A-Seal 603 meets and/or exceeds all requirements of ASTM C 923, including physical properties of materials and performance testing, including:

- 13 PSI minimum in straight alignment
- 10 PSI at minimum 7° angle
- 10 PSI minimum under ultimate shear load of 150 lbs/in. pipe diameter

Cast-A-Seal 603 meets the requirements of the following Standards, Specifications, Codes, and Test Methods:

- ASTM C 923 Standard Specification for Resilient Connectors Between Reinforced Concrete Manhole Structures, Pipes, and Laterals
- ASTM C 1478 Standard Specification for Storm Drain Resilient Connectors Between Reinforced Concrete Storm Sewer Structures, Pipes, and Laterals
- ASTM C 1244 Standard Test Method for Concrete Sewer Manholes by the Negative Air Pressure (Vacuum) Test
- ASTM F 2510 Standard Specification for Resilient Connectors Between Reinforced Concrete Manhole Structures and Corrugated



Press-Seal believes all information is accurate as of its publication date. Information, specifications, and prices are all subject to change without notice. Press-Seal is not responsible for any inadvertent errors. Copyright 2022.

Phone: 800-348-7325
Fax: (260) 436-1908

PRESS-SEAL CORPORATION
Protecting Our Planet's Clean Water Supply
ISO 9001: Registered • Version 02.16.22.11.17

Email: sales@press-seal.com
Web: www.press-seal.com

CAST-A-SEAL 603

SELECTION GUIDES

PIPE DESCRIPTION	PIPE O.D.	GASKET I.D.	CLAMPS
8" PVC	8.40" 213 mm	8.75" 222 mm	(1) 600.152
10" PVC	10.50" 266 mm	10.85" 275 mm	(1) 600.188
12" PVC	12.50" 317 mm	12.85" 326 mm	(1) 600.232
15" PVC	15.30" 388 mm	15.65" 397	(1) 600.296
18" PVC	18.70" 475 mm	19.05" 484 mm	(1) 600.376

Harco PVC Pipe Manhole Adapter		
PIPE DESCRIPTION	PIPE O.D.	HARCO PART NUMBER
4" 101.6 mm	4.21" 107 mm	53-3304xx
6" 152.4 mm	6.28" 168 mm	53-3306xx
8" 203.2 mm	8.40" 207 mm	53-3308xx
10" 254 mm	10.50" 259 mm	53-3310xx
12" 300 mm	12.5" 317.5mm	53-3312xx
15" 375 mm	15.3" 388.6mm	53-3315xx
18" 450mm	18.7" 475.0mm	53-3318xx
24" 600 mm	24.8" 629.9mm	53-3324xx
30" 762 mm	32" 813 mm	53-3330xx

All adaptor corrugated HDPE openings connect to full profile corrugation pipe, pipe gasket provided in most cases.

NOTE: Nyloplast pipe OD's match standard SDR-35 PVC Pipes

ADS Nyloplast PVC Pipe Manhole Adapter		
Drawing numbers for reference: STD-205A, 205D, 207A, 207C		
PIPE DESCRIPTION	PIPE O.D.	Nyloplast PVC Product Code
12" 300 mm	12.5" 317.5mm	1257AGHPU2
15" 375 mm	15.3" 388.6mm	1557AGHPU2
18" 450 mm	18.7" 475.0mm	1857AGHPU2
21" 525 mm	22.1" 561.3mm	2157AGHPU2
24" 600 mm	24.8" 629.9mm	2457AGHPU2

NOTE: Nyloplast pipe OD's match standard SDR-35 PVC Pipes

HARCO fittings are available for all HDPE manufacturer's. Please contact for availability and pricing.

Press-Seal believes all information is accurate as of its publication date. Information, specifications, and prices are all subject to change without notice. Press-Seal is not responsible for any inadvertent errors. Copyright 2022.

