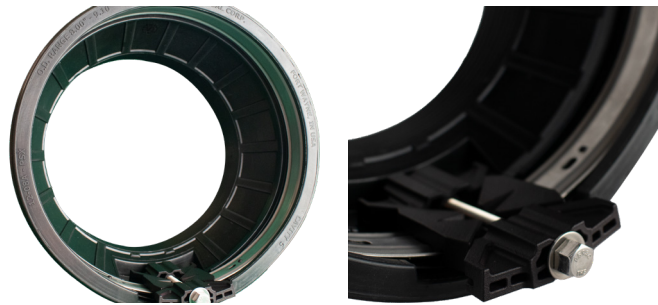


# PSX: WEDGE DRIVE

## PIPE TO MANHOLE & TANK CONNECTOR



### What It Is

PSX: Wedge Drive is a high-performance flexible pipe-to-manhole connector that offers easy installation and long-term performance in one convenient product.

Whether you core or cast your holes, PSX: Wedge Drive fits right into your production methods, ready to seal your toughest applications every time.

### How It Works

- The connector fits into a cast or cored hole.
- Take-up clamps made from series 304 stainless steel with quick adjusting screws secure the connector to the pipe.

### Where To Use

- Manholes
- Wet wells
- Square pump and lift stations
- Stormwater structures
- On-site treatment structures
- Junction chambers
- Grease interceptors
- Vaults

### Why It's Better

- Safely install from outside of the manhole preventing falls from crawling down into structures.
- Corrosion resistance in our 300 series stainless steel provides consistent performance in any environment.
- Manufactured with no welds or rivets for unmatched structural integrity and durability.
- The innovative engineered molded-in snap pins are a steadfast feature that helps keep the boot reliably assembled.
- Void injection technology, increasing wedge strength and durability.
- Contractor can save time and money by backfilling immediately.

Press-Seal believes all information is accurate as of its publication date. Information, specifications, and prices are all subject to change without notice. Press-Seal is not responsible for any inadvertent errors. Copyright 2024.



# PSX: WEDGE DRIVE

## SUBMITTAL SPECIFICATIONS

---

Pipe-to-Manhole and Structure Connector Specification for Sanitary and Storm Sewer Applications:

All pipe-to-manhole and structure connections shall meet and or exceed ASTM C 923, Standard Specification for Resilient Connectors Between Reinforced Concrete Manholes, Structures, Pipes and laterals.

All metallic mechanical devices, including castings, bolt assemblies, adjusters shall use non-magnetic 300 series stainless steel with no welds or rivets in its assemblies.

If thermal plastic internal expansion rings or expansion wedges are used, they must be heavy duty automotive grade material molded with an expansion installation mechanism.

The installation of the connector shall be accomplished at one time and shall require no additional adjustments or installation at a later time to ensure a watertight seal.

Take up clamps shall use non-magnetic 300 series stainless steel and be installed in the field using a T-Handle Torque wrench set to 60 inch-pounds and installation shall follow manufacturer's instructions.

The connector shall be PSX: Wedge Drive, PSX: Direct Drive and PSX: Nylo Drive as manufactured by Press-Seal Corporation of Fort Wayne, IN or approved equal.

---

## PRODUCT PERFORMANCE

---

PSX: Wedge Drive, PSX: Nylo Drive, PSX: Direct Drive meets or exceeds the all requirements of the following specifications:

- ASTM C 923 - Standard Specification for Resilient Connectors Between Reinforced Concrete Manhole Structures, Pipes, and Laterals
- ASTM C 1244 Standard Test Method for Concrete Sewer Manholes by the Negative Air Pressure (Vacuum) Test
- ASTM C 1478 - Standard Specification for Storm Drain Resilient Connectors Between Reinforced Concrete Storm Sewer Structures, Pipes, and Laterals
- ASTM F 2510 Standard Specification for Resilient Connectors Between Reinforced Concrete Manhole Structures and Corrugated High Density Polyethylene Drainage Pipes

---

## BEST PRACTICES

---

1. Vacuum testing shall be conducted in strict conformance with ASTM C 1244, prior to backfill.
2. Pipe Stubs must be restrained from movement per ASTM C 923.
3. Tightening of the external stainless steel take-up clamps should be done by using a torque-setting wrench available from Press-Seal Corporation.



Press-Seal believes all information is accurate as of its publication date. Information, specifications, and prices are all subject to change without notice. Press-Seal is not responsible for any inadvertent errors. Copyright 2024.

Phone: 800-348-7325  
Fax: (260) 436-1908

**PRESS-SEAL CORPORATION**  
*Protecting Our Planet's Clean Water Supply*  
ISO 9001: Registered • Version 03.25.24.1.46

Email: [sales@press-seal.com](mailto:sales@press-seal.com)  
Web: [www.press-seal.com](http://www.press-seal.com)

# PSX: WEDGE DRIVE

## SELECTION GUIDE

HOLE SIZE	PSX™:WEDGE DRIVE SIZE and DESCRIPTION	CONNECTOR PART NUMBER	PIPE O.D. ACCOMMODATION RANGE (INCHES)	GASKET I.D. (INCHES)	TAKE-UP CLAMP	
					QTY	PART #
11" 11.00-11.20" 279-284 mm	11-06.A PSX™:WEDGE DRIVE	558.1106.A	5.70" - 6.90" 145 - 175 mm	6.30" 160 mm	1	600.128
11" 11.00-11.20" 279-284 mm	11-08.A PSX™:WEDGE DRIVE	558.1108.A	8.00 - 8.50" 203 - 216 mm	8.44" 214 mm	1	600.152
12" 12.00-12.20" 305-310 mm	12-06.A PSX™:WEDGE DRIVE	558.1206.A	5.70" - 6.90" 145 - 175 mm	6.30" 160 mm	1	600.128
12" 12.00-12.20" 305-310 mm	12-08.A PSX™:WEDGE DRIVE	558.1208.A	8.00 - 9.10" 203 - 231 mm	8.63" 219 mm	1	600.152
16" 16.00-16.20" 406-411 mm	16Y.A PSX™:WEDGE DRIVE	558.16Y.A	10.00 - 11.10" 254 - 282 mm	10.75" 273 mm	1	600.188
16" 16.00-16.20" 406-411 mm	16L.A PSX™:WEDGE DRIVE	558.16L.A	11.36 - 12.50" 289 - 318 mm	12.10" 307 mm	1	600.232
16" 16.00-16.20" 406-411 mm	16M.A PSX™:WEDGE DRIVE	558.16M.A	12.05" TO 13.30" 306 - 338 mm	12.75" 324 mm	1	600.232

Press-Seal believes all information is accurate as of its publication date. Information, specifications, and prices are all subject to change without notice. Press-Seal is not responsible for any inadvertent errors. Copyright 2024.

