

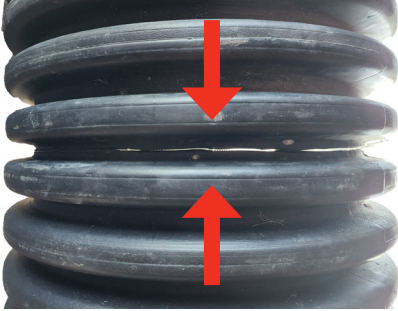
STRAP WRAP

PART OF THE EZ WRAP PRODUCT LINE

INSTALLATION INSTRUCTIONS

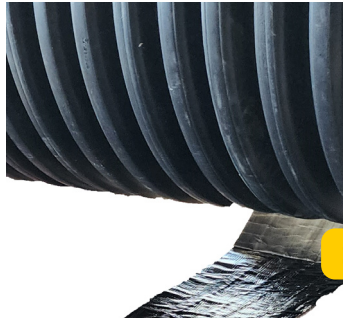
This ratchet type wrap is designed for corrugated HDPE pipe

STEP 1 Align and clean the joint.



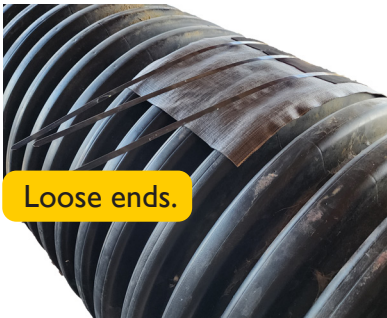
STEP 2

Center the wrap on the joint. Remove the protective film where the wrap will meet the pipe. Do not allow the protective film to touch the mastic layer once removed.



Shown with film removed.

STEP 3 Apply the loose end of the wrap that **does not** have the ratchets to the joint.



Loose ends.

STEP 4

Apply the ratchet end of the wrap to the joint so it overlaps with the loose end of the wrap.



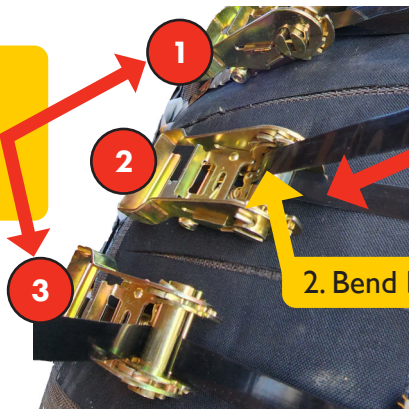
Ratchets.

Ratchet Pads.

STEP 5

Thread the metal band through the ratchet, then back in the other direction. Position the Ratchet on top of the Ratchet Pad and tighten the band. The Ratchets should remain on top of their pads throughout the tightening process and when complete.

Tighten the outer bands before tightening the inner band.



1. Thread through the ratchet.

2. Bend back in the other direction.

STEP 6

If desired, trim the excess metal banding. Remove the protective film from the closing flap and use the flap to cover the ratchets.

